

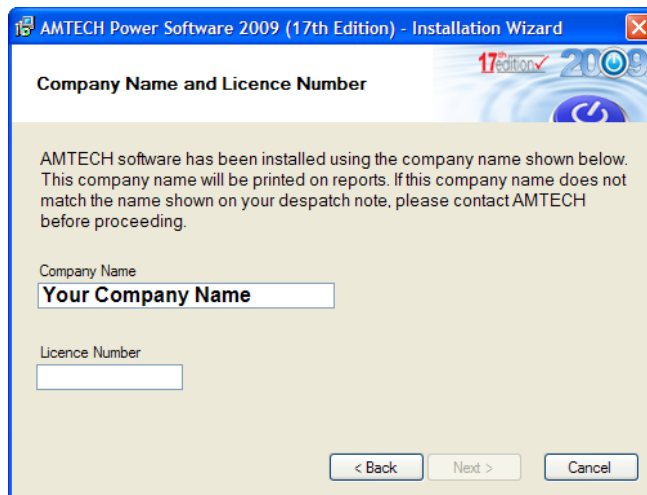
## 2009 SP1 Installation Guide

### Option 1 – You have not yet installed 2009 initial release DVD

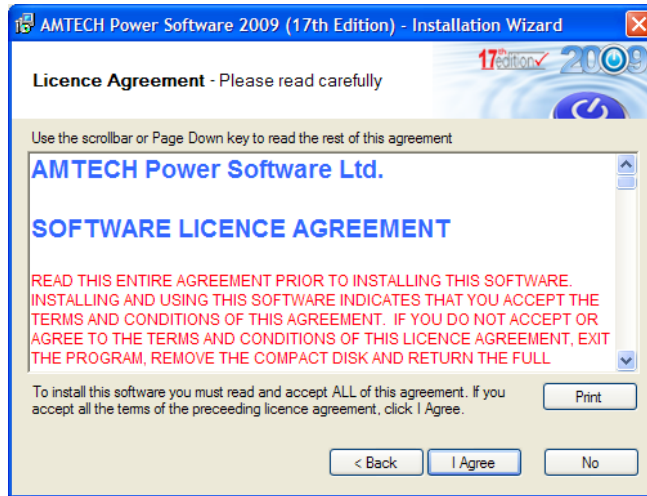
1. Insert 2009 Service Pack 1 DVD into your DVD drive. The setup should run automatically and the following screen will be displayed.
2. Select **Next** on the Installation Wizard



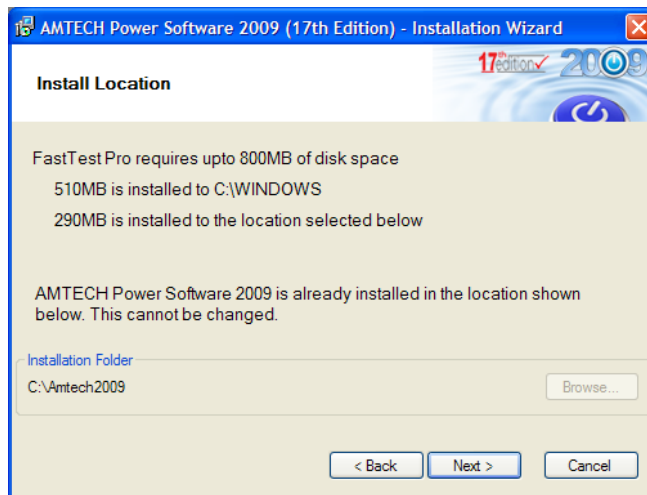
3. Enter your Company Name & Licence Number and then select **Next**



- Once you have read & understood the Licence Agreement click **I Agree** to proceed or **No** to cancel the installation



- AMTECH will install to the default location on your local hard disk drive. If AMTECH has never been previously installed to this pc, you can browse to another location, then select **Next**



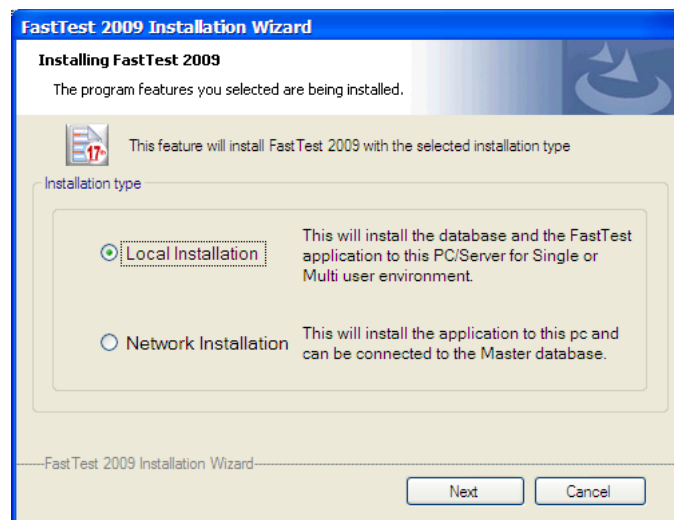
- You will be notified of the products that are about to be installed, click **Next** to confirm



- Prior to the FastTest installation commencing your computer will be checked for all the prerequisites required to run FastTest, if they are not already installed they will be listed here. Select **Install** to continue

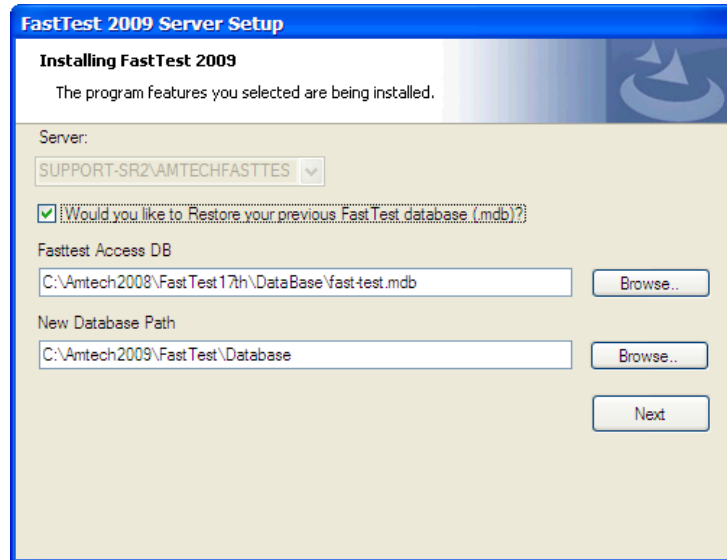


- If you are installing FatTest Plus or Pro you will have the option to select Local or Network installation. Please select Local and click on **Next**



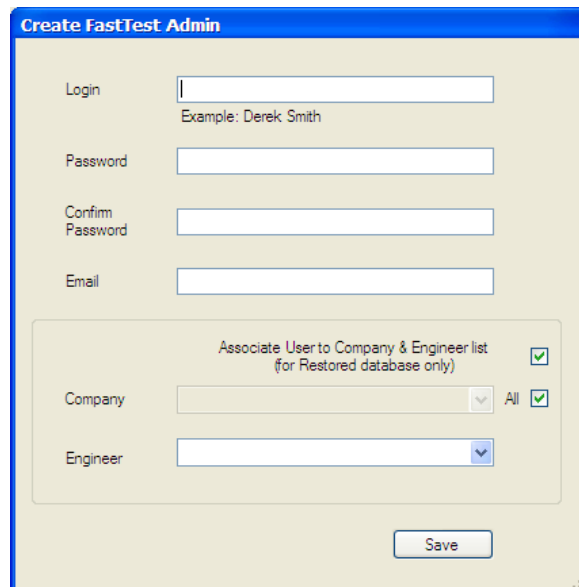
- If you wish to install Standalone version on your PC select, Local Installation (see installation guides on the DVD for more information)
- If you wish to install Network version on you PC select, Network Installation (see installation guides on the DVD for more information)

- The FastTest server setup form will allow you to either to Restore your previous FastTest database (2005 version 5.3.0 SP2 - Date) or create a blank one. The installation will automatically detect the location of your current FastTest database or allow you to browse to one to restore. Upon selection click **Next** to proceed



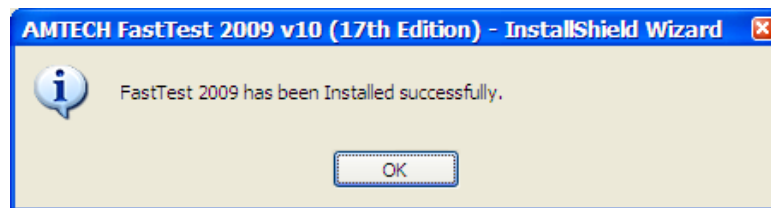
The image shows a screenshot of the 'FastTest 2009 Server Setup' dialog box. The title bar reads 'FastTest 2009 Server Setup'. The main heading is 'Installing FastTest 2009' with a sub-message: 'The program features you selected are being installed.' Below this, there is a 'Server:' section with a dropdown menu showing 'SUPPORT-SR2\AMTECHFASTTES'. A checkbox is checked with the text 'Would you like to Restore your previous Fast Test database (.mdb)?'. There are two text input fields: 'Fasttest Access DB' with the path 'C:\Amtech2008\Fast Test 17h\DataBase\fast-test.mdb' and a 'Browse...' button; and 'New Database Path' with the path 'C:\Amtech2009\FastTest\Database' and a 'Browse...' button. At the bottom right, there is a 'Next' button.

- Once the database has been installed you will have to create an **Administrator** username and password. If you have restored a previous FastTest database you will have the option to associate the user to a Company & Engineer from the restored database. Once this information has been entered select **Save** to continue

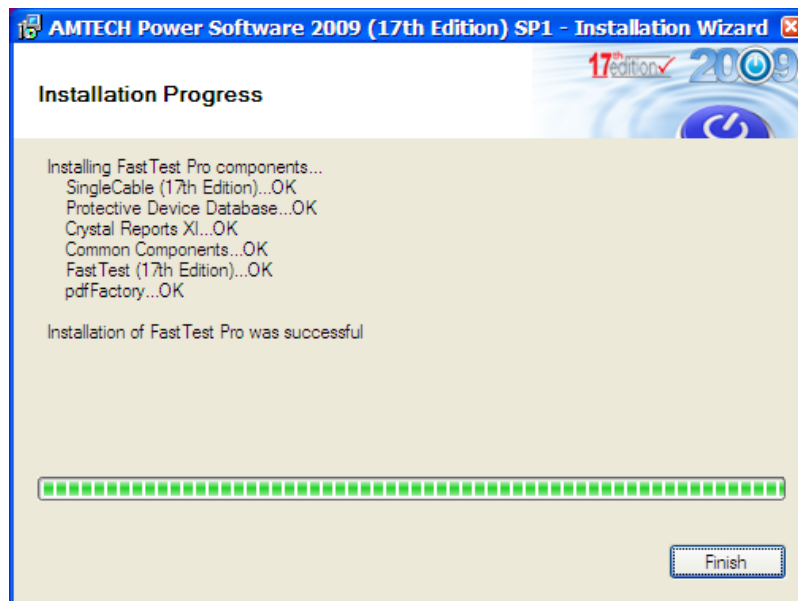


The image shows a screenshot of the 'Create FastTest Admin' dialog box. The title bar reads 'Create FastTest Admin'. It contains several input fields: 'Login' with an example 'Derek Smith', 'Password', 'Confirm Password', and 'Email'. Below these is a section titled 'Associate User to Company & Engineer list (for Restored database only)' with a checked checkbox. Under this section, there are two dropdown menus: 'Company' with 'All' selected and a checked checkbox, and 'Engineer'. At the bottom right, there is a 'Save' button.

11. You will now be advised that FastTest has installed successfully. Click Ok and follow the on-screen instructions to complete the AMTECH installation



12. Click Finish



13. FastTest has now installed correctly
14. Launch FastTest 2009 from the Desktop and login in with your newly created **Administrator** username and password.