

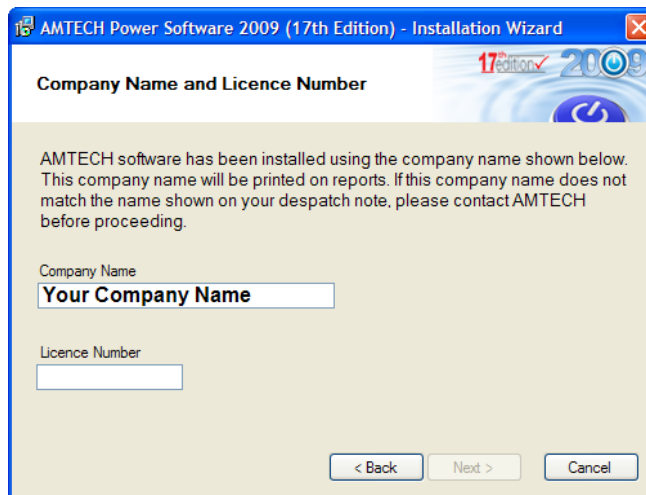
2009 SP1 Installation Guide

Option 2 – You have installed 2009 initial release DVD but have not yet used it

1. Insert 2009 Service Pack 1 DVD into your DVD drive. The setup should run automatically and the following screen will be displayed.
2. Select **Next** on the Installation Wizard



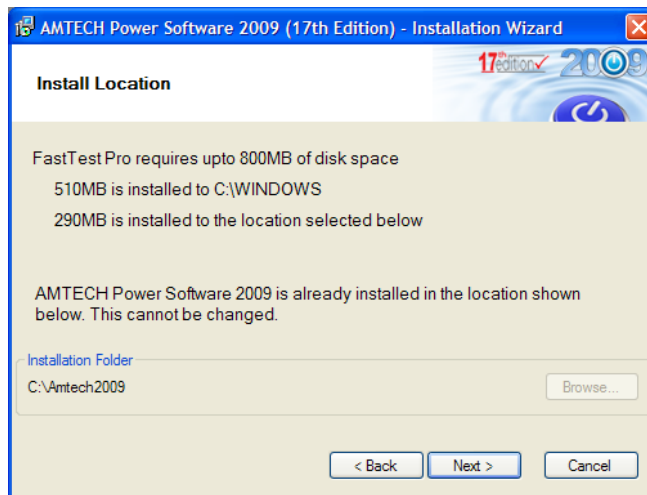
3. Enter your Company Name & Licence Number and then select **Next**



- Once you have read & understood the Licence Agreement click **I Agree** to proceed or **No** to cancel the installation



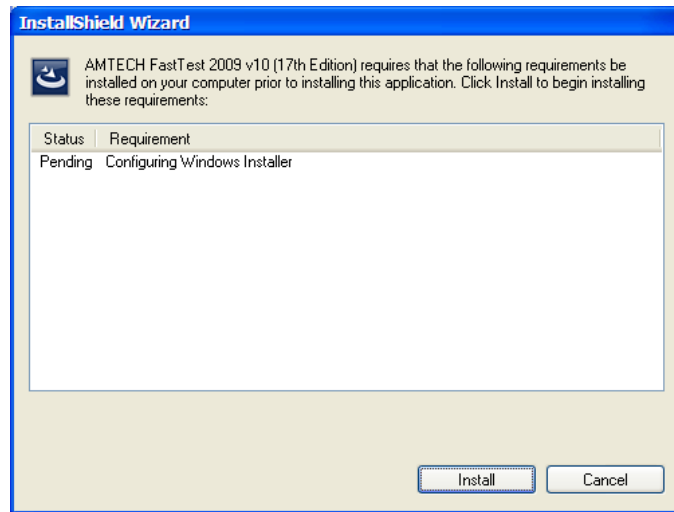
- AMTECH will install to the default location on your local hard disk drive. If AMTECH has never been previously installed to this pc, you can browse to another location, then select **Next**



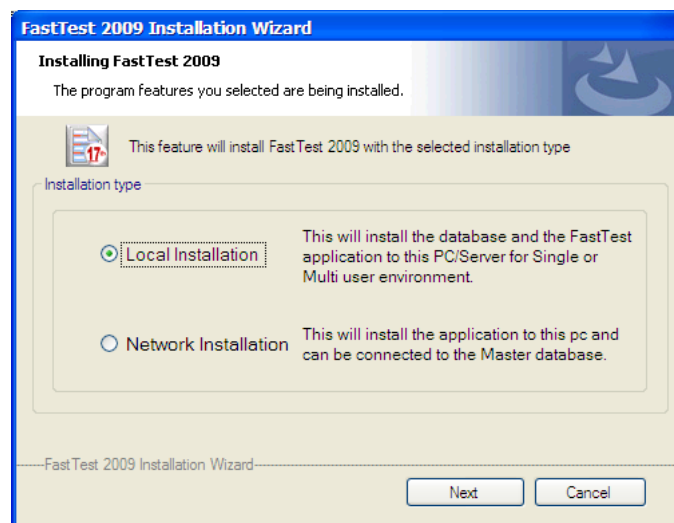
- You will be notified of the products that are about to be installed, click **Next** to confirm



7. Prior to the FastTest installation commencing your computer will be checked for all the prerequisites required to run FastTest, if they are not already installed they will be listed here. Select **Install** to continue

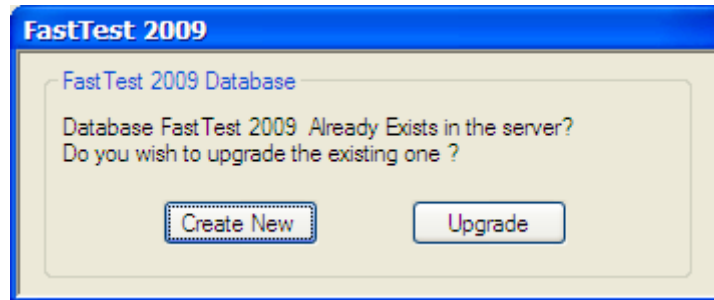


8. If you are installing FatTest Plus or Pro you will have the option to select Local or Network installation. Please select Local and click on **Next**

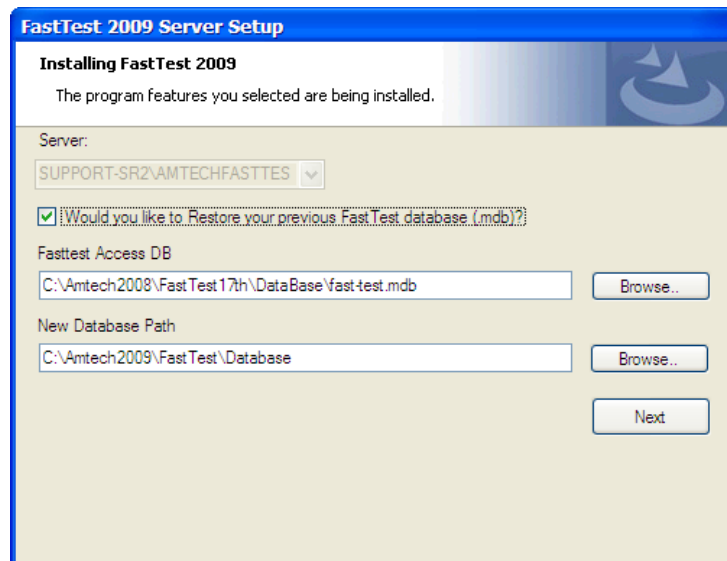


- If you wish to install Standalone version on your PC select, Local Installation (see installation guides on the DVD for more information)
- If you wish to install Network version on you PC select, Network Installation (see installation guides on the DVD for more information)

- The installation will detect that you have previously installed the initial 2009 application and give you the option to either upgrade (convert) your existing database by selecting **Upgrade** or select **New** to create a new blank database which will remove your current 2009 database and replace with new blank one.



- If you have selected to create a **New** database the FastTest server setup form will allow you to either to Restore your previous FastTest database (2005 version 5.3.0 SP2 - Date) or create a blank one. The installation will automatically detect the location of your current FastTest database or allow you to browse to one to restore. Upon selection click **Next** to proceed



11. Once the database has been installed you will have to create an **Administrator** username and password. If you have restored a previous FastTest database you will have the option to associate the user to a Company & Engineer from the restored database. Once this information has been entered select **Save** to continue

Create FastTest Admin

Login
Example: Derek Smith

Password

Confirm Password

Email

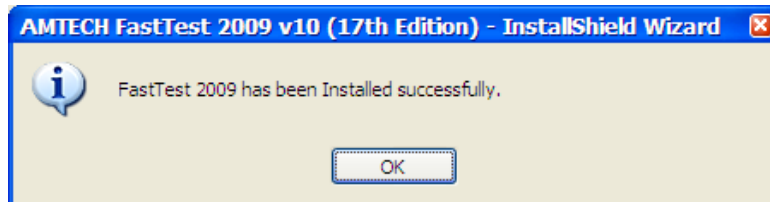
Associate User to Company & Engineer list (for Restored database only)

Company All

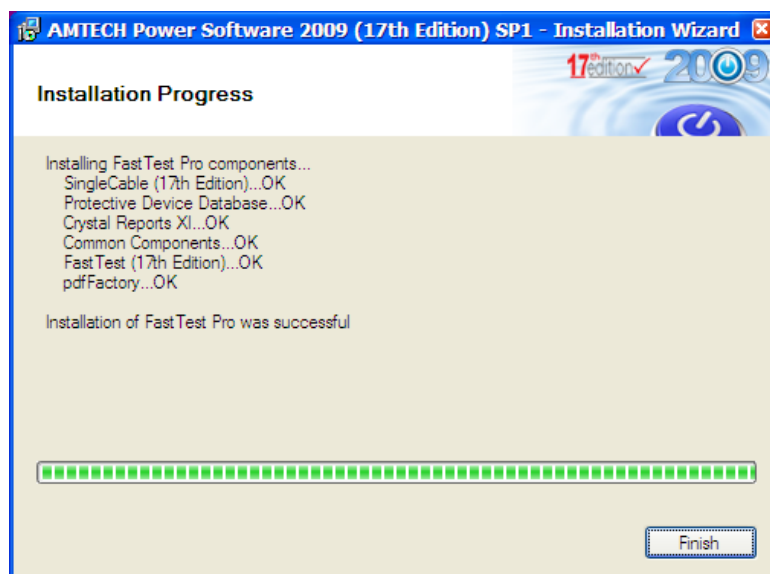
Engineer

Save

12. You will now be advised that FastTest has installed successfully. Click Ok and follow the on-screen instructions to complete the AMTECH installation



13. Click Finish



14. FastTest has now installed correctly
15. Launch FastTest 2009 from the Desktop and login in with your newly created **Administrator** username and password.