

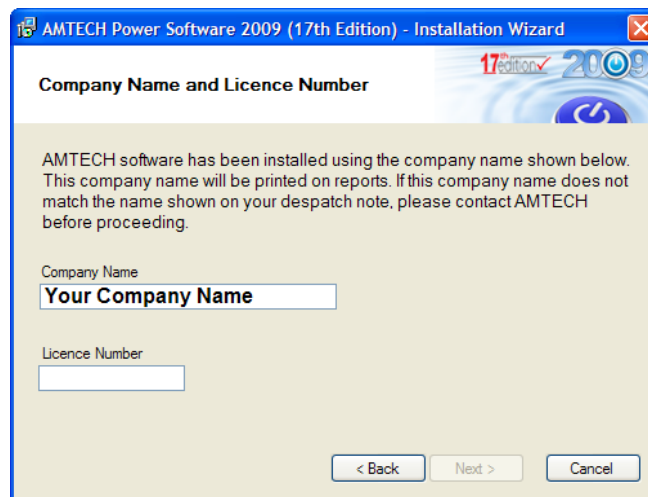
2009 SP1 Installation Guide

Option 3 – You have installed 2009 initial release DVD but DID NOT migrate previous data and have been using 2009 since.

1. Insert 2009 Service Pack 1 DVD into your DVD drive. The setup should run automatically and the following screen will be displayed.
2. Select **Next** on the Installation Wizard



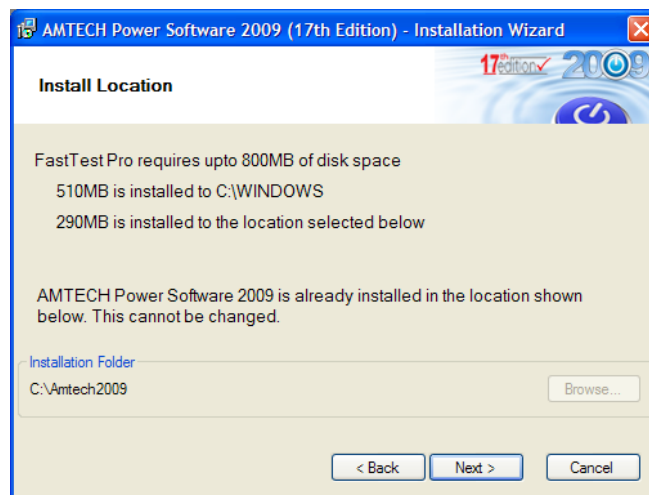
3. Enter your Company Name & Licence Number and then select **Next**



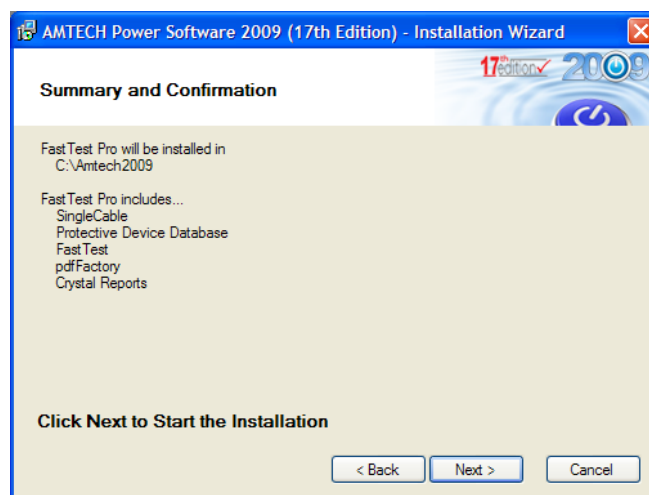
- Once you have read & understood the Licence Agreement click **I Agree** to proceed or **No** to cancel the installation



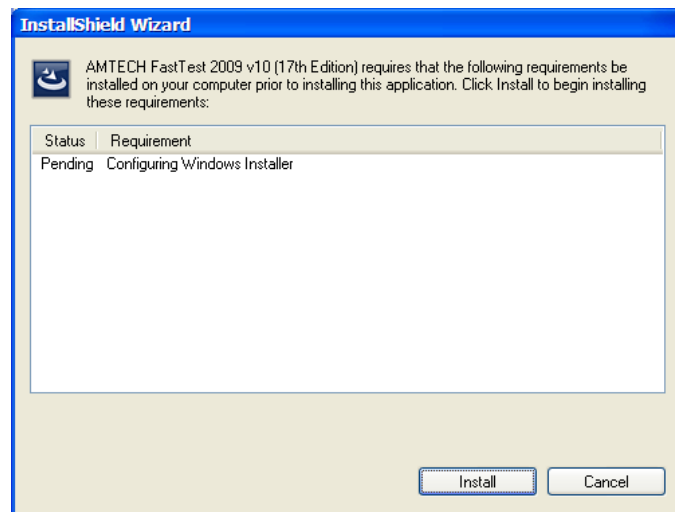
- AMTECH will install to the default location on your local hard disk drive. If AMTECH has never been previously installed to this pc, you can browse to another location, then select **Next**



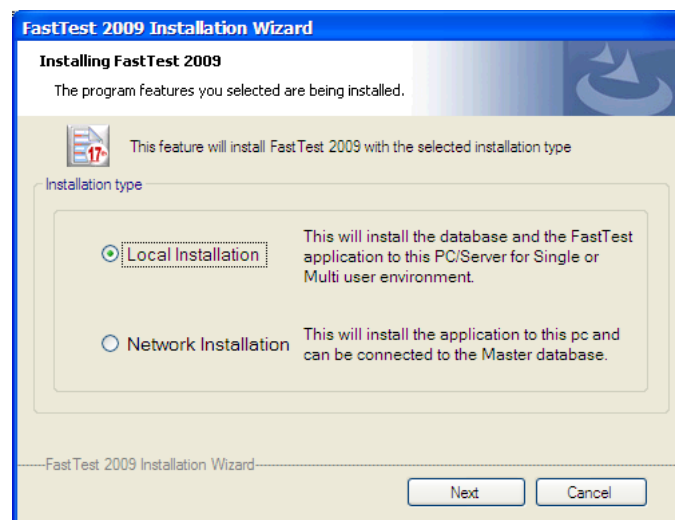
- You will be notified of the products that are about to be installed, click **Next** to confirm



7. Prior to the FastTest installation commencing your computer will be checked for all the prerequisites required to run FastTest, if they are not already installed they will be listed here. Select **Install** to continue

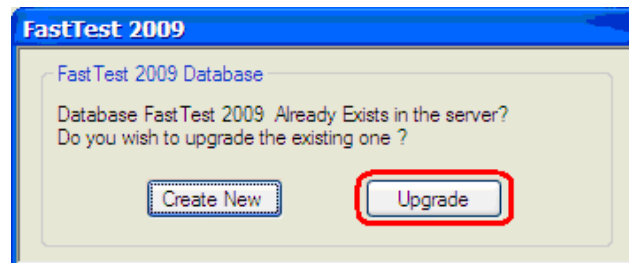


8. If you are installing FastTest Plus or Pro you will have the option to select Local or Network installation. Please select Local and click on **Next**

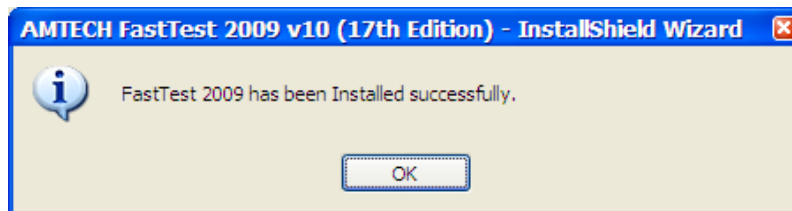


- If you wish to install Standalone version on your PC select, Local Installation (see installation guides on the DVD for more information)
- If you wish to install Network version on you PC select, Network Installation (see installation guides on the DVD for more information)

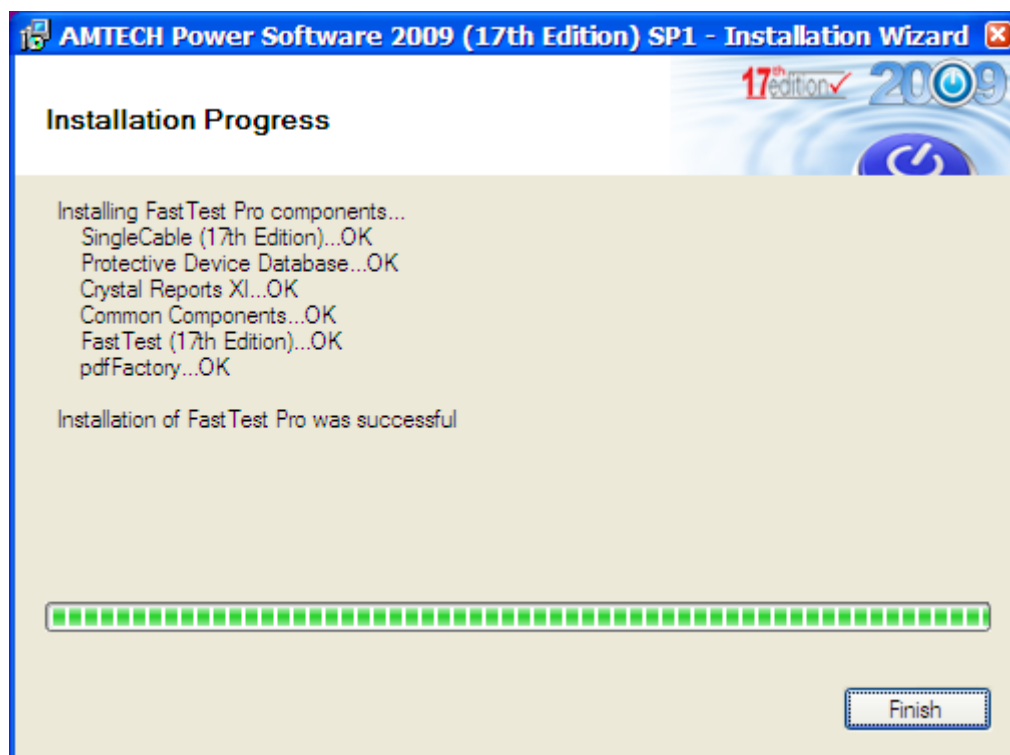
9. The installation will detect that you have previously installed the initial 2009 application and give you the option to either upgrade (convert) your existing database by selecting **Upgrade** or select **New** to create a new blank database which will remove your current 2009 database and replace with new blank one.
10. Select the **Upgrade** button (this will update/convert your current database to the new SP1 version of 2009)



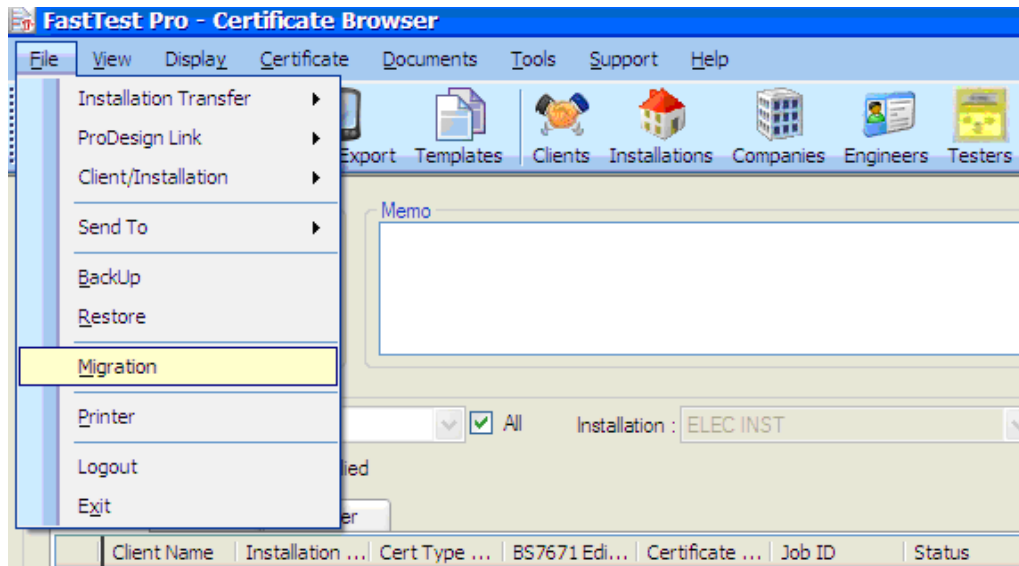
11. Upon a successful upgrade the following message will be displayed, Click Ok and follow the on-screen instructions to complete the AMTECH installation



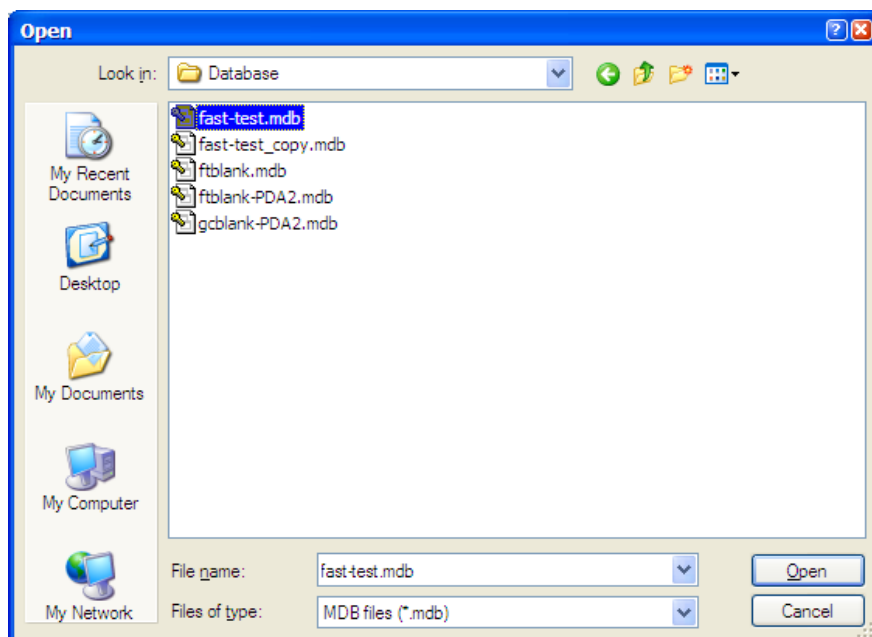
12. Click ok to Finish the installation



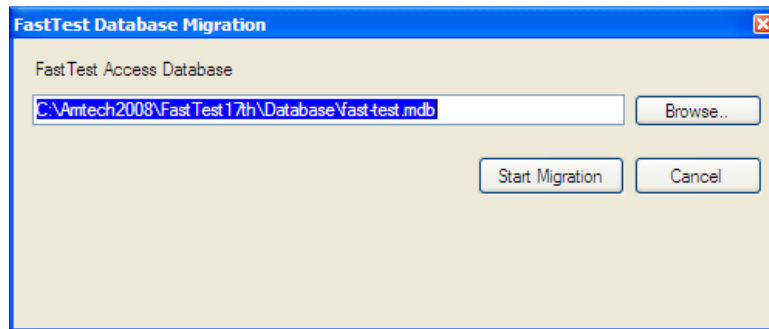
13. Launch FastTest 2009 from the Desktop and login in with your original **Administrator** username and password. You will now have the option to migrate your old FastTest database into 2009. This option is only available in FastTest Plus or FastTest Pro. If you have FastTest Domestic or FastTest Standard, then you will need to contact Support Department on 0870 1244722 to convert your data for you.
14. If you are running FastTest Plus or Pro then from the application select File > Migration.



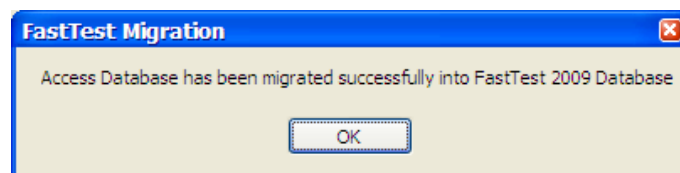
15. Navigate to the location of your previous FastTest database, the default location for FastTest 2008 17th Edition is: C:\Amtech2008\FastTest17th\Database and select the fast-test.mdb file
Note: All Backed Up databases need to be unzipped / extracted prior to migration in order for FastTest 2009 to see the .mdb file format.
16. Select the relevant database and select open.



17. The following screen is displayed, check that the file path is correct and click on the **Start Migration** button



18. Upon successful migration the following message will be displayed. Click OK



19. Please select the **Refresh** button at the bottom of the Certificate Browser to view all migrated data.

